

MOVIE THEMES

PIANO BOOK



www.jpmusicacademy.com.au

UNDER THE SEA - Intro

↑ ↑
E G C E E
D F E C
↑ ↑
C E G C C
B D C



♩ = 140

C G C

G C

Power Rangers- Theme



Play grey box twice

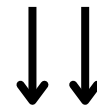
E
E E D E G--- E--

C D
E B A G F#

C D x2
E E D E G--- E--

F
F F F F F-- F F F F F---

E
G F E



E F F# G G# A A# B E- E E

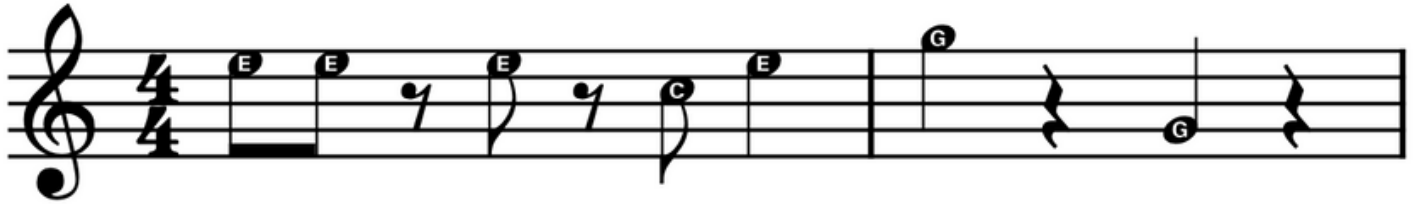
Left hand is in bold

Super Mario- Theme



D7

G



C

F



C



Barbie Girl



E C E A F

D B D G E D C

C A D A

2 1 2 5 3 2

I'm a Bar-bie girl in a Bar-bie world, _____ life in plas-tic,

3

Detailed description: This block contains the first system of musical notation for the song 'Barbie Girl'. It features a grand staff with a treble clef and a bass clef, both in 4/4 time. The melody is written in the treble clef, and the bass line is in the bass clef. The lyrics are: 'I'm a Bar-bie girl in a Bar-bie world, _____ life in plas-tic,'. Above the treble clef, there are fingerings: '2 1 2 5 3' for the first measure, '2' for the second measure, and '2' for the third measure. Below the bass clef, there is a '3' under the first measure.

D C E D E C E A F F D B D G E D C

4 2 2

it's fan-tas-tic, you can brush my hair, un-dress me ev-'ry-where, _____

Detailed description: This block contains the second system of musical notation. It features a grand staff with a treble clef and a bass clef, both in 4/4 time. The melody is in the treble clef, and the bass line is in the bass clef. The lyrics are: 'it's fan-tas-tic, you can brush my hair, un-dress me ev-'ry-where, _____'. Above the treble clef, there are fingerings: '4' for the first measure, '2' for the second measure, and '2' for the third measure.

A C A D A D D D C E D C

7

im-ag-i-na-tion, life is your cre-a-tion..

Detailed description: This block contains the third system of musical notation. It features a grand staff with a treble clef and a bass clef, both in 4/4 time. The melody is in the treble clef, and the bass line is in the bass clef. The lyrics are: 'im-ag-i-na-tion, life is your cre-a-tion..'. Above the treble clef, there is a '7' for the first measure.

Wednesday



C A A A B C / A A A A B C

A A A C / E F E

LET IT GO- Frozen



A B C- / GG D-

CA AAAAA B C-

A B C- / G EE

D- C D /

E E FEDC / D C



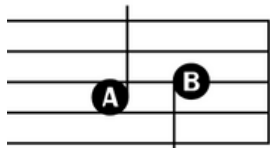
Notes together mean
play faster

(dash)- = 2 counts

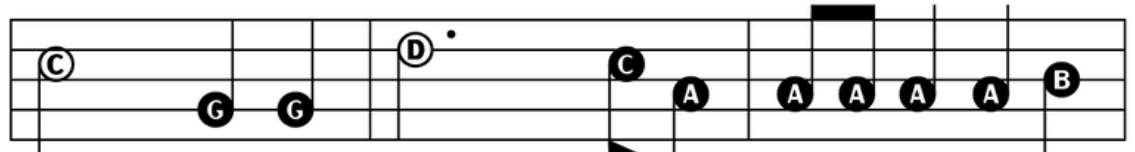
LET IT GO- Frozen



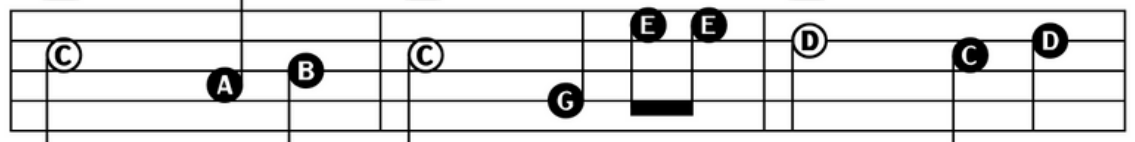
84



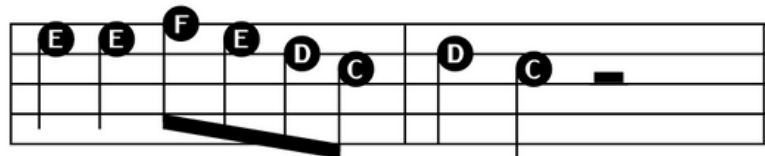
Let it



go, let it go; can't hold it back an - y -
go, let it go; I am one with the wind and



more. Let it go, let it go; turn a -
sky. Let it go, let it go; it you'll



way and slam the door.
nev - er see me cry.

